

SPH ICU Multidisciplinary Quality and Safety Committee **DASHBOARD**

October 12th 2016 Update



We will continuously improve the safety and quality of care provided so that patient achieve the best possible health outcomes.

Aims:

- We provide the right care to the right patient every time.
- We ensure that our patients experience no needless harm.

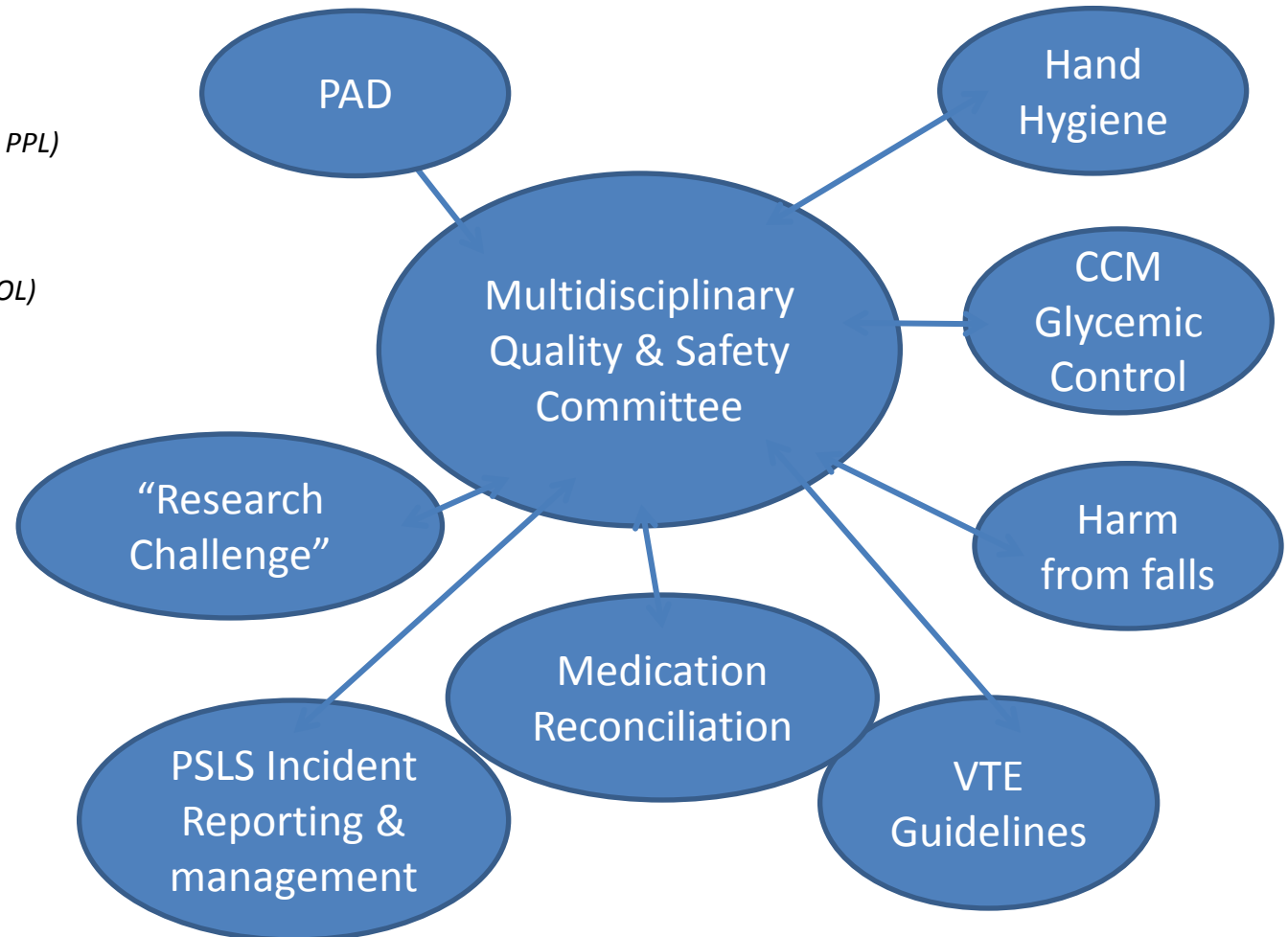


SPH ICU Multidisciplinary Quality & Safety Committee

Members:

- Laurel Aeberhardt (Dietitian)*
- Beth Blanchette (RN)*
- Dr. Glen Brown (Pharmacist)*
- Susan Bello (CNE)*
- Chris Gagnon (Respiratory Therapy PPL)*
- Sarah Ho (SW)*
- Jason Kent (RN)*
- Janice Leonard (Interim PD)*
- Dr. Demetrious Sirounis (Physician OL)*
- Bal Sidhu (IPAC)*
- (PD)*
- (SLP)*
- Anne Tuppurainen (Spiritual Care)*
- Sarah Walker (SW)*
- Ellen Woo (PT)*
- Shirley Lee (CNL Group)*
- Vivian Wong (OT)*
- Mia Marles (RN)*
- Karen Ann Boodle (PIC)*

Quality Improvement Initiatives 2016-2017





PSLS Report Degree of Harm

Related Accreditation Canada Standards: 15, 16, 17 (2017)

Goals:

100% PSLS incidents reported.

Status:

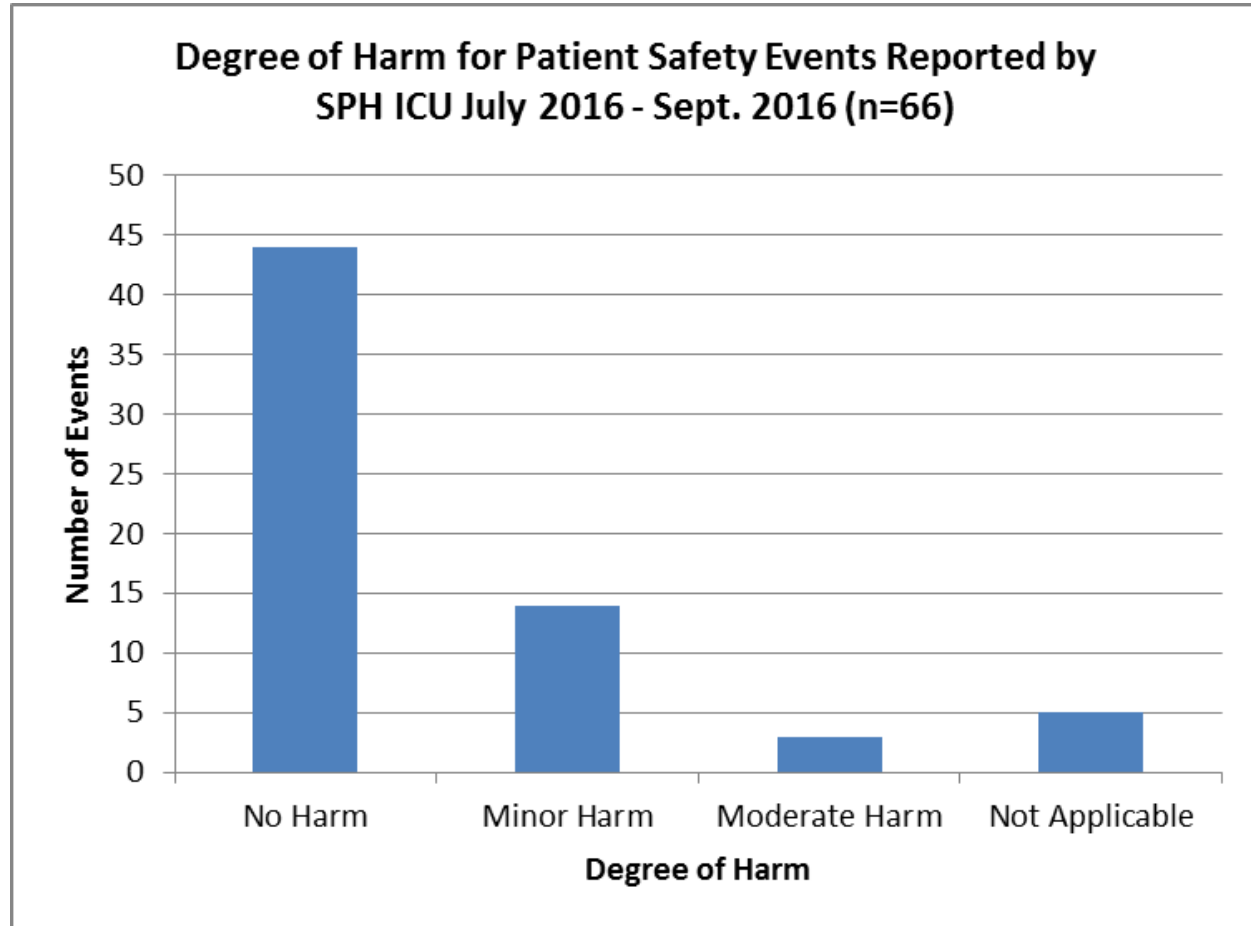
Incidents reviewed in Safety Huddles.

Current Focus:

All incidents and near misses entered into PSLS system.

Team:

Janice Leonard
Kevin Carriere
Susan Bello



Source: BC PSLS
Updated October 5, 2016



PSLS Report Degree of Harm

Related Accreditation Canada Standards: 15, 16, 17 (2017)

Goals:

100% PSLS incidents reported.

Status:

Incidents reviewed in Safety Huddles.

Current Focus:

All incidents and near misses entered into PSLS system.

Team:

Janice Leonard
Kevin Carriere
Susan Bello

| | |
|---|-----------|
| Medication / IV fluid / biological (includes vaccine) | 17 |
| Unsafe behaviour | 10 |
| Equipment / product / medical device | 7 |
| Laboratory | 6 |
| Clinical process / procedure | 6 |
| Fall | 4 |
| Blood transfusion / blood products | 3 |
| Nutrition | 3 |
| Vascular access lines | 2 |
| Accident (excluding falls) | 2 |
| Resources / organizational management | 1 |
| Healthcare associated infection | 1 |
| Clinical administration | 1 |
| Oxygen / gas / vapour | 1 |
| Pressure ulcer / skin injury | 1 |
| Infrastructure / building / fixture | 1 |
| Grand Total | 66 |

Source: BC PSLS
Updated October 5, 2016



PSLS Reporting Falls

Related Accreditation Canada Standards: 15, 16, 17, (2017)

Goal(s):

100% PSLs incidents reported.

Status:

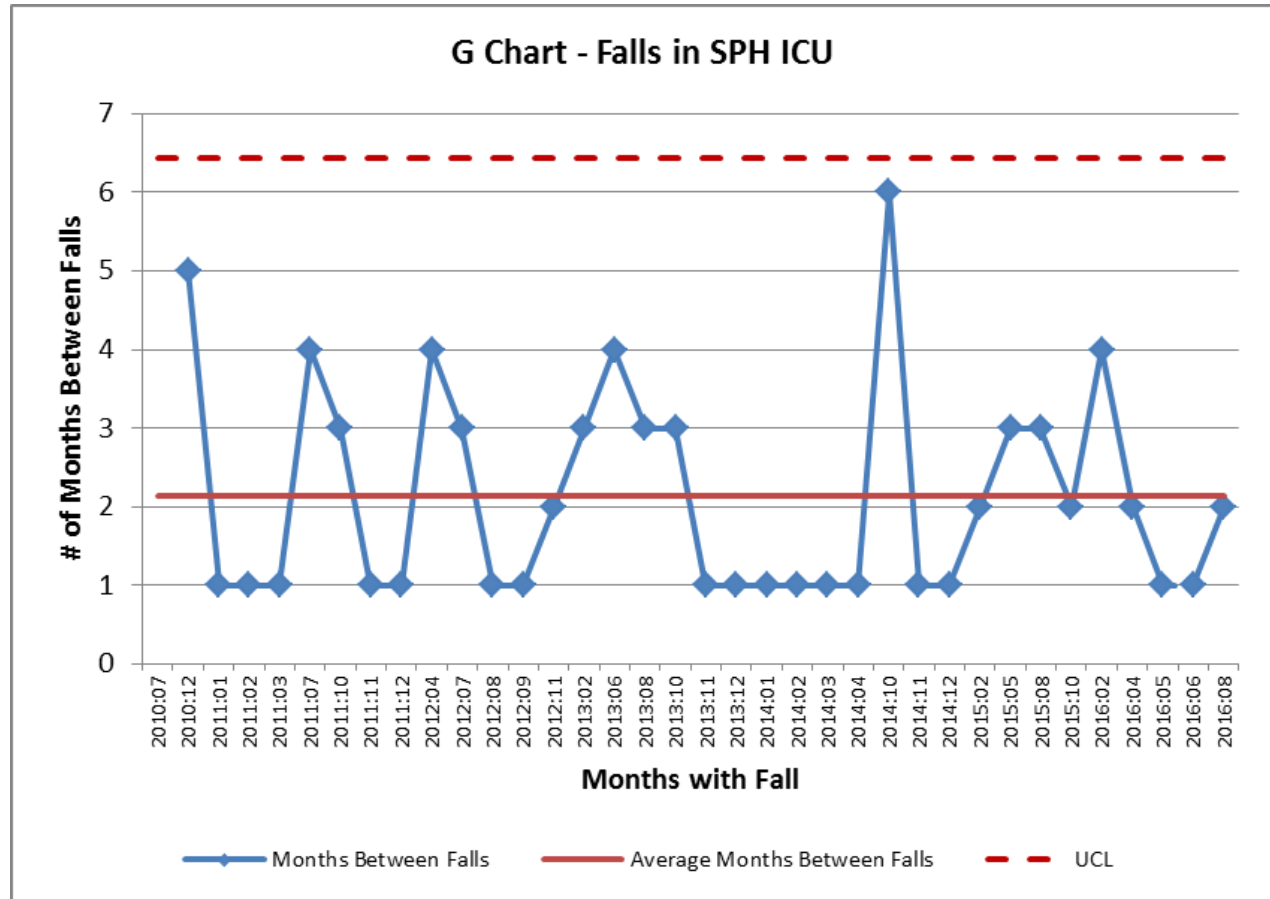
Incidents reviewed in Safety Huddles.

Current Focus:

All incidents and near misses entered into PSLs system.

Team:

Janice Leonard
Kevin Carriere
Susan Bello



Source: BC PSLs
Updated October 5, 2016





Goals:

1. 100% of patients with risk assessment complete.
2. 100% of patients with orders complete.
3. 100% of patients receiving appropriate VTE prophylaxis.
4. 100% of patients discharged with thromboprophylaxis prescription.

Status:

16/17 Q1 100% on all criteria.

Current Focus:

Sustainment

Team:

Janice Leonard
Dr. Glen Brown
Ellen Woo



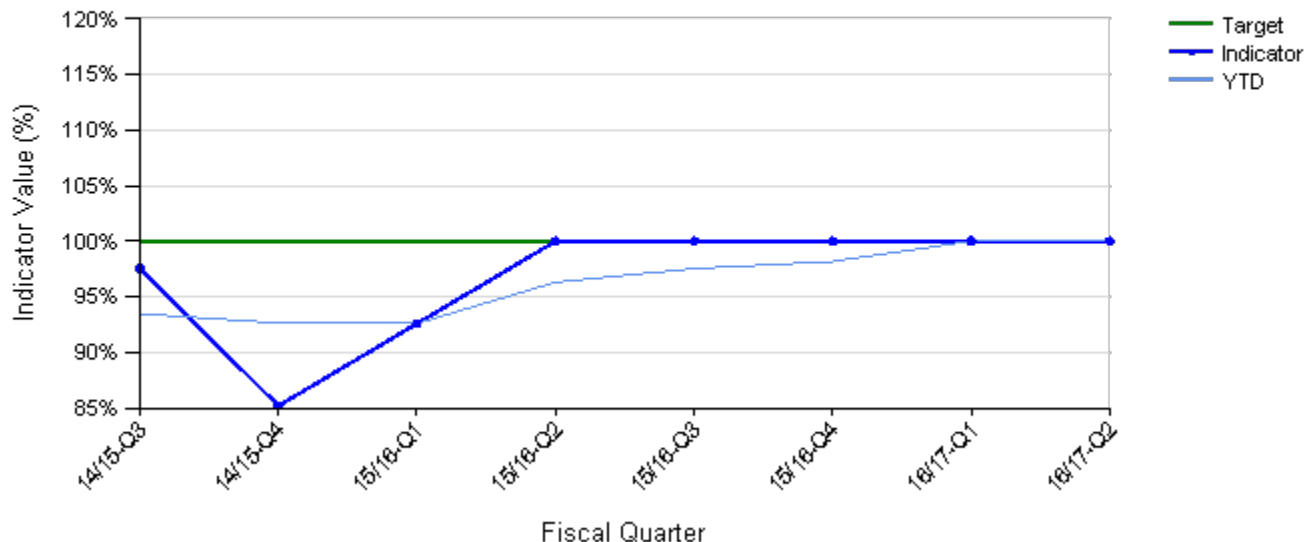
Venous Thromboembolism (VTE)

Related Accreditation Canada Standard: 15, 16, 17 (2017)

100%

VTE Composite

Intensive Care



Source: PHC Balanced Score Card
Updated October 5, 2016



NSAE Composite

Related Accreditation Canada Standard: 15, 17 (2017)

Goal:

- Rate of 10/1000 patient discharges Out of hospital.

Status:

- 16/17-03: 76.9
- YTD: 107.1/1000

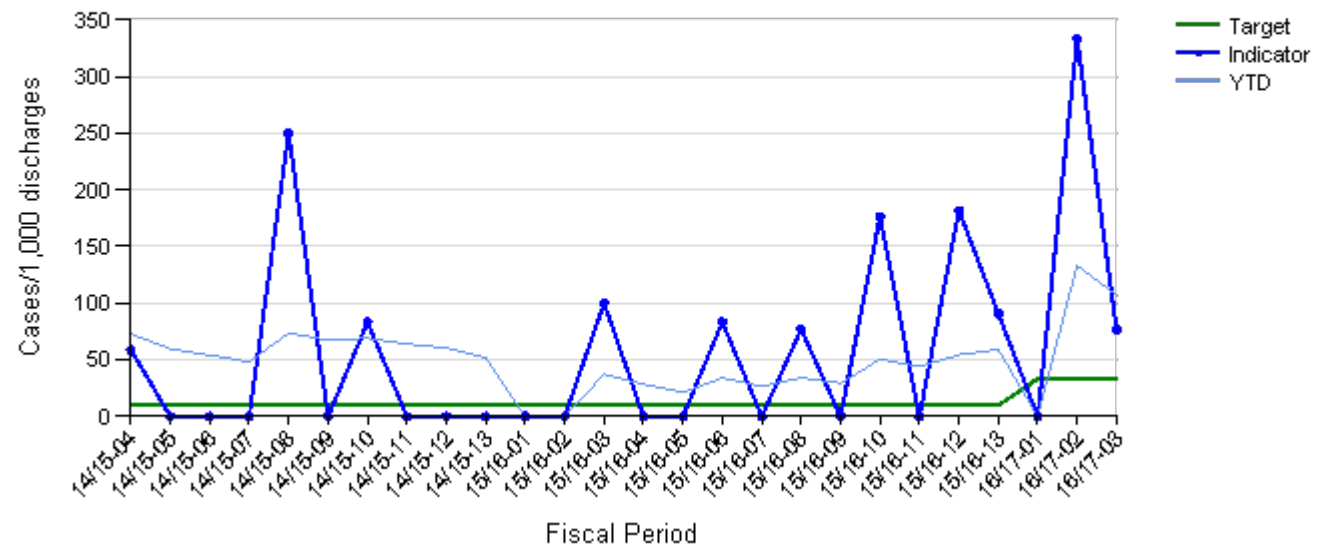
Current Focus:

Team:

Janice Leonard
Ellen Woo

NSAE Composite (P4P)

Intensive Care/St Paul's



*1 out of 13 cases

Source: PHC Balanced Score Card
Updated October 5, 2016



NSAE Fractures

Related Accreditation Canada Standard: 15, 17 (2017)

Goal:

- Rate of 10/ 1000 patient discharges Out of hospital.

Status:

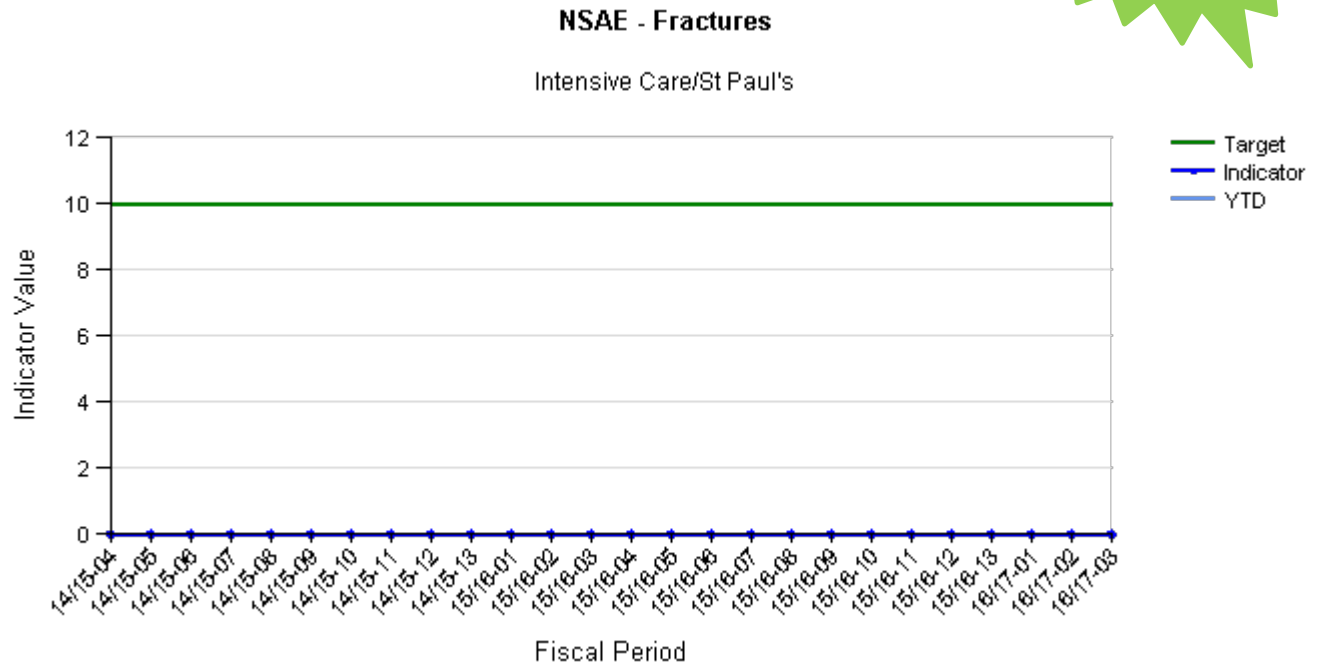
- 0

Current Focus:

- Maintain

Team:

Janice Leonard
Ellen Woo



Source: PHC Balanced Score Card
Updated October 5, 2016



NSAE Pneumonia

Related Accreditation Canada Standard: 15, 17 (2017)

Goal:

- Rate of 10/ 1000 patient discharges Out of hospital.

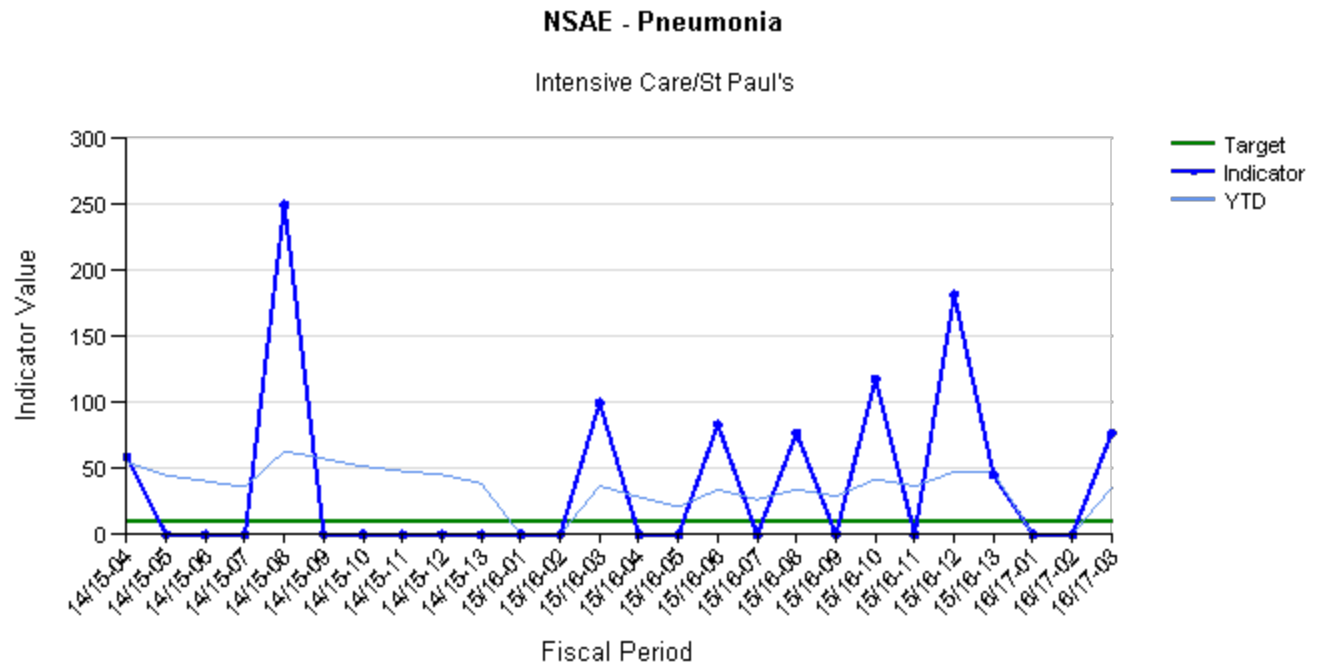
Status:

- 16/17-03: 76.9
- YTD: 35.7/1000

Current Focus:

Team:

Janice Leonard
Ellen Woo



Source: PHC Balanced Score Card
Updated October 5, 2016



NSAE Pressure Ulcers

Related Accreditation Canada Standard: 15, 17 (2017)

Goal:

- Rate of 10/ 1000 patient discharges Out of hospital.

Status:

- 16/17-03: 0.0
- YTD: 0.0/1000

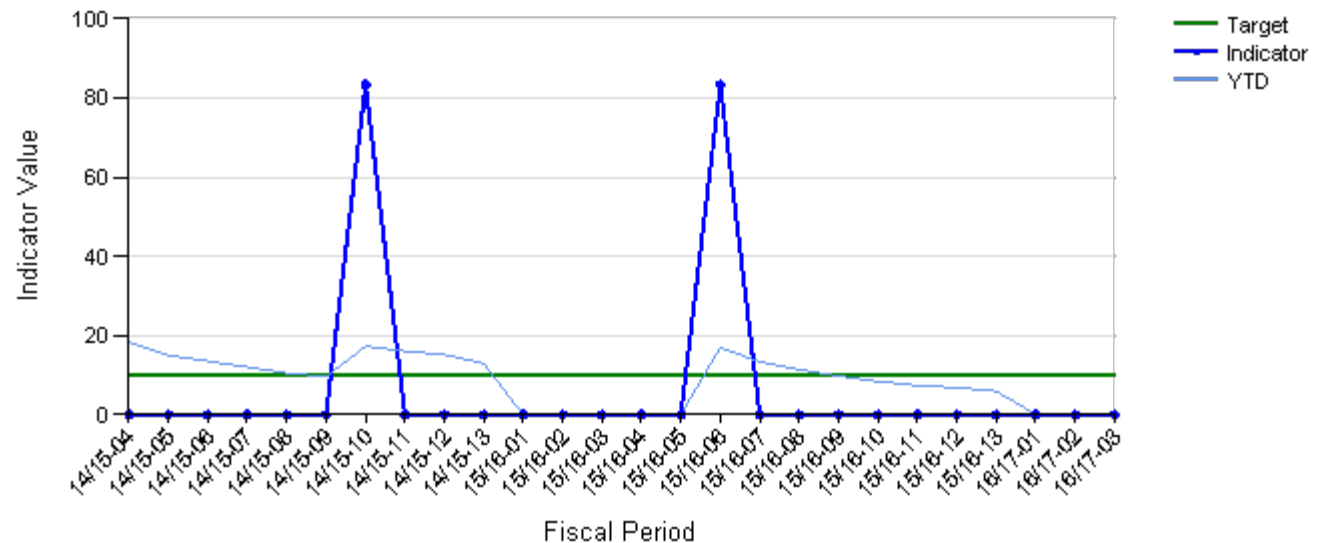
Current Focus:

Team:

Janice Leonard
Ellen Woo

NSAE - Pressure Ulcers

Intensive Care/St Paul's



Source: PHC Balanced Score Card
Updated October 5, 2016



NSAE- UTI

Related Accreditation Canada Standard: 15, 17 (2017)

Goal:

- Rate of 10/ 1000 patient discharges Out of hospital.

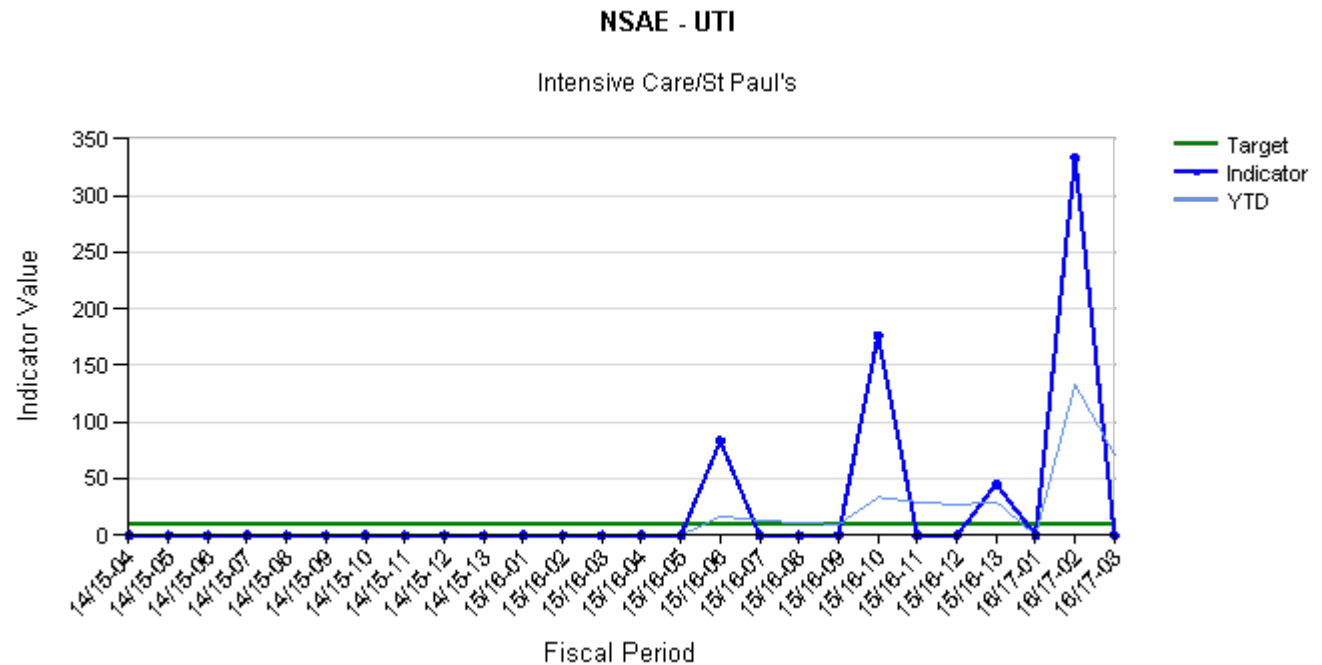
Status:

- 16/17-03: 0
- YTD: 71.4/1000

Current Focus:

Team:

Janice Leonard
Ellen Woo



Source: PHC Balanced Score Card
Updated October 5, 2016



Occupancy

Related Accreditation Canada Standard: ?????? (2017)

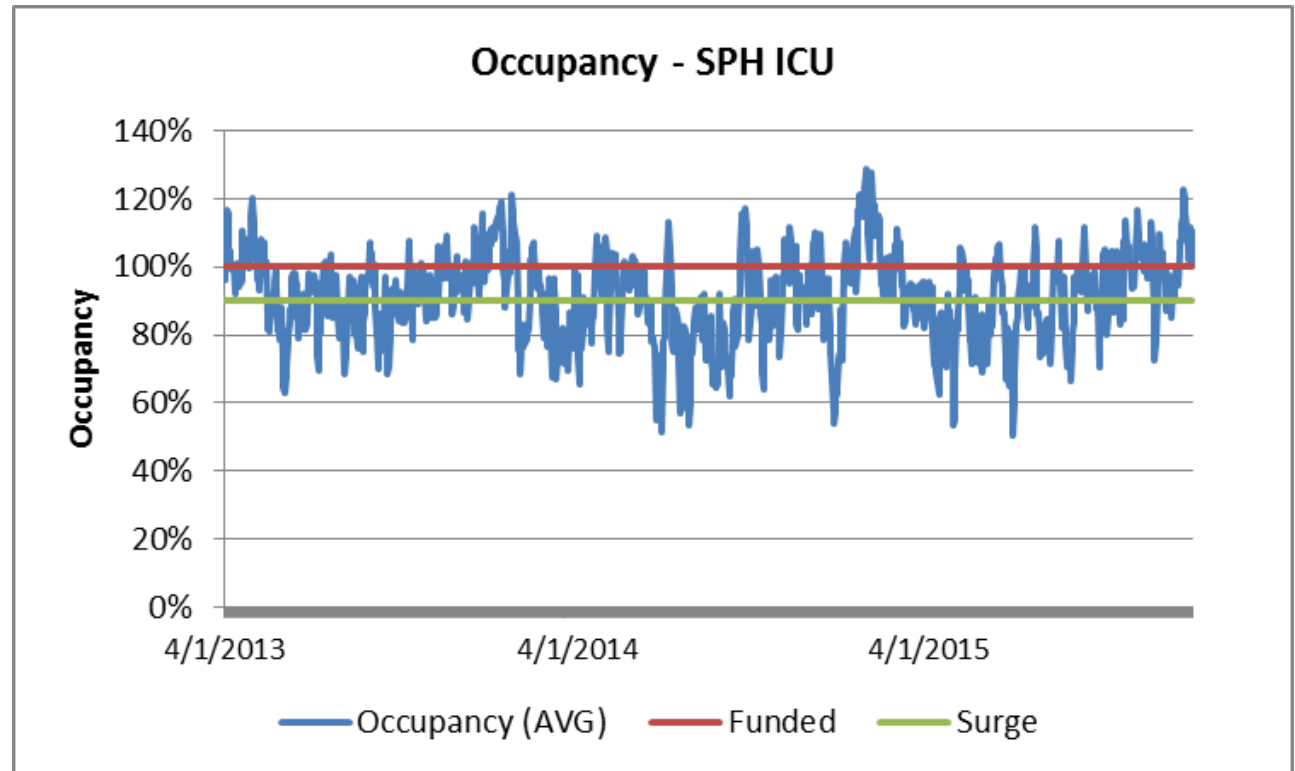
Goal:

- 95%

Status:

Current Focus:

Team:

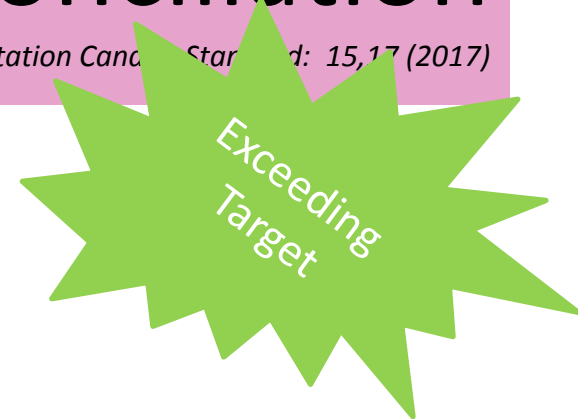


Source: ICU Database
Updated October 5, 2016



Medication Reconciliation

Related Accreditation Category: Standard: 15.17 (2017)



Goal:

75% patients with medication reconciliation performed at admission.

Status:

16/17-03 81.3%
YTD 88.9%

Current Focus:

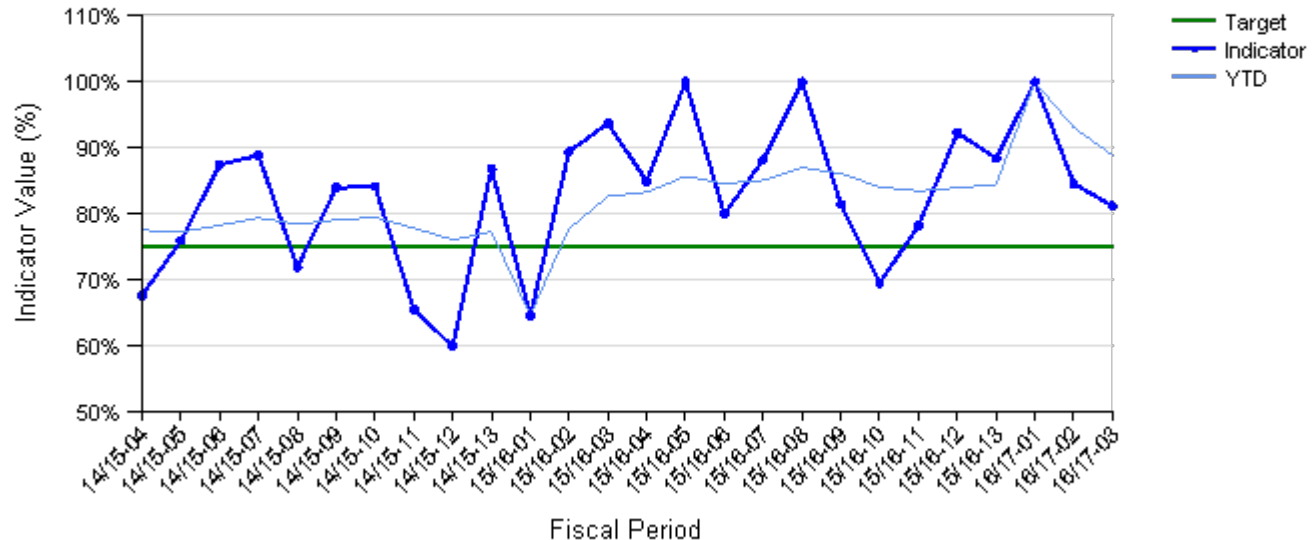
Sustainment.

Team:

Glen Brown
Janice Leonard

Med Rec at Admission Composite

Intensive Care/St Paul's



Source: PHC Balanced Score Card
Updated October 5, 2016





Hand Hygiene

Related Accreditation Canada Standards: 8 (2017)

Goals:

85%.

Status:

16/17 Q2 – 87.5%

16/17 YTD – 87.3%

Current Focus:

Point of care providers to continue focusing on improving 'before' patient contact hand hygiene compliance

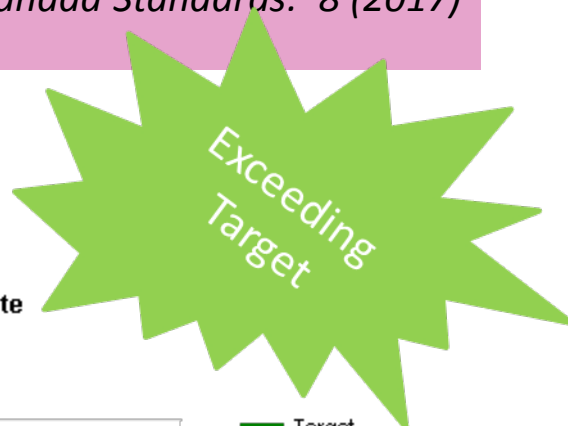
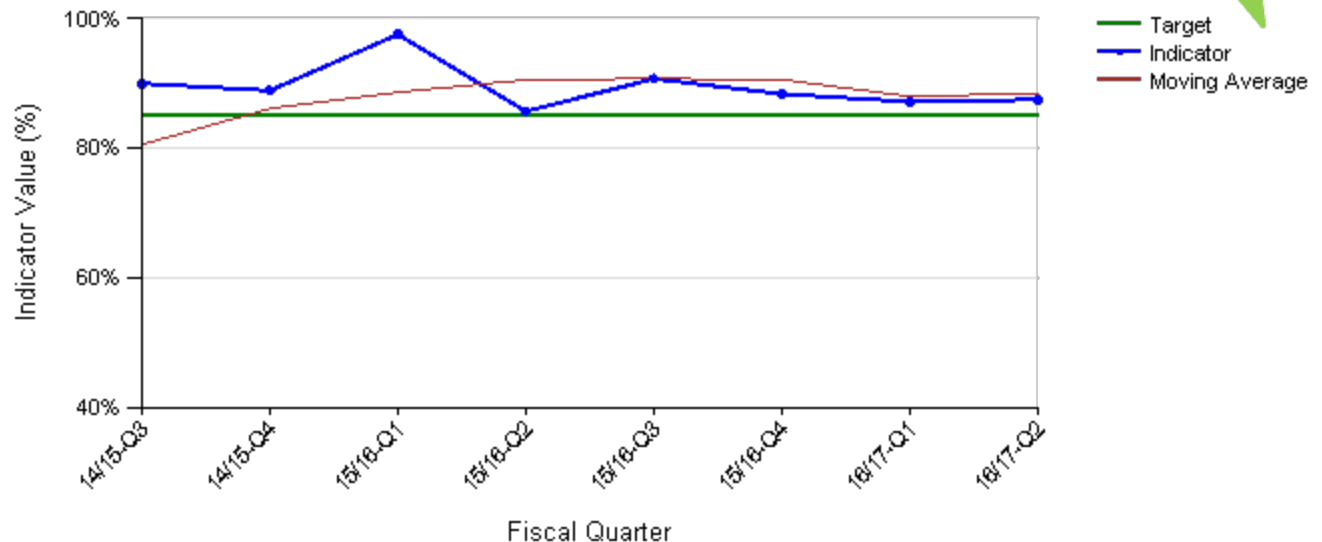
Team:

Janice Leonard



Hand Hygiene Compliance - Acute

Emergency/St Paul's/ICU



Source: BC PSLS
Updated October 5, 2016

Sick Time and Overtime

Related Accreditation Canada Standards: 5 (2017)

Goal:

Overtime is 6.60%
Sick time is 5.40%

Status:

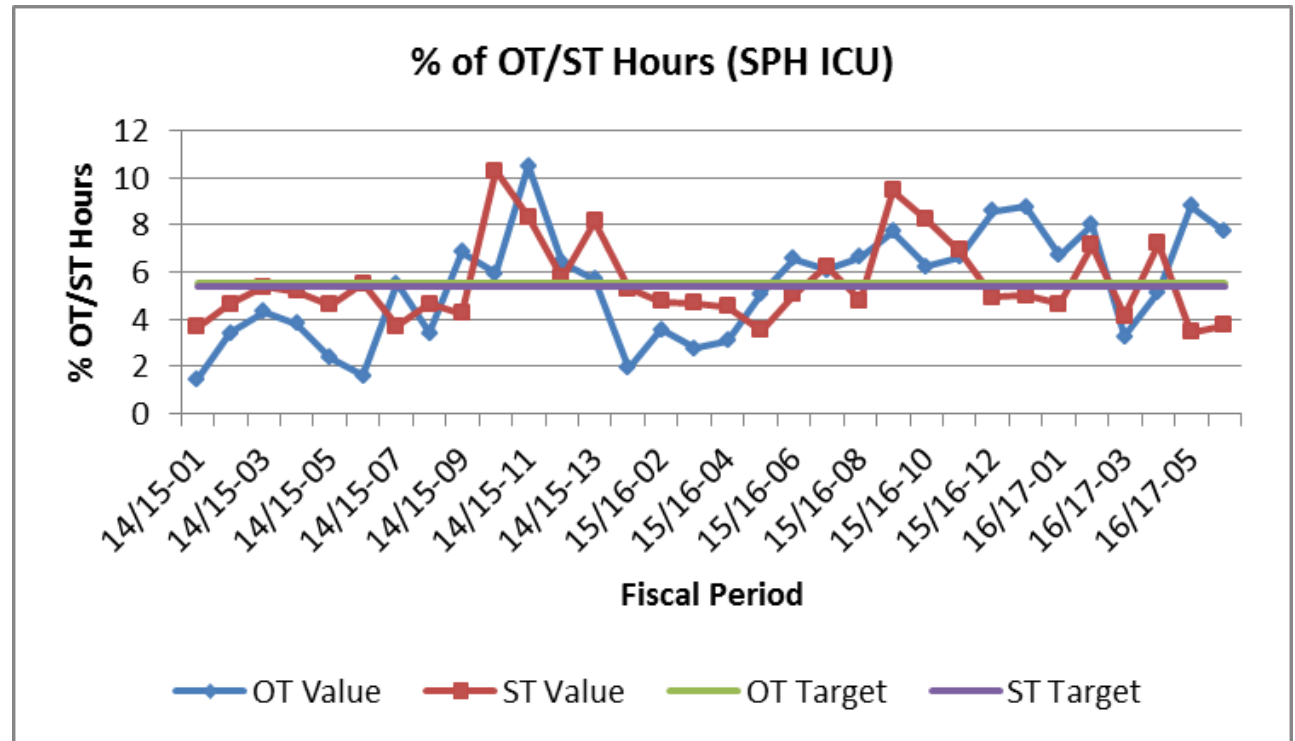
OT YTD: 5.94 %
ST YTD: 5.10%

Current Focus:

Staff awareness: Did you know that you need approximately 600-800 hours of banked sick time to carry you through to Long Term Disability if you were to become injured or very ill?

Team:

Janice Leonard (OL)
Elliot Ebel (Finance)
CNL Team





Donor Referral

Related Accreditation Canada Standards: 12 (2017)

Goal:

All patients aged 90 years or less referred to the Donor Referral Line (DRL) (age cut off for organs is 90, for tissue is 75)

Status:

Current Focus:

DONOR IDENTIFICATION

- **G**- Glasgow Coma Scale ≤ 5
- **I**- Injury to Brain
- **V**- Ventilated
- **E**- End of life Consideration.

Team:

Janice Leonard

| Unit | Death<75 | Calls To Statline | Rule Outs by Statline | Donors |
|---------------------------------|-----------|-------------------|-----------------------|----------|
| July 1- December 31 2015 | | | | |
| SPH ICU | 51 | 42 | 13 | 2 |
| SPH Total | 152 | 95 | 34 | 6 |
| January 1 - June 30 2016 | | | | |
| SPH ICU | 45 | 47 | 21 | 3 |
| SPH Total | 141 | 101 | 47 | 6 |



Reintubation

Related Accreditation Canada Standard: ????? (2017)

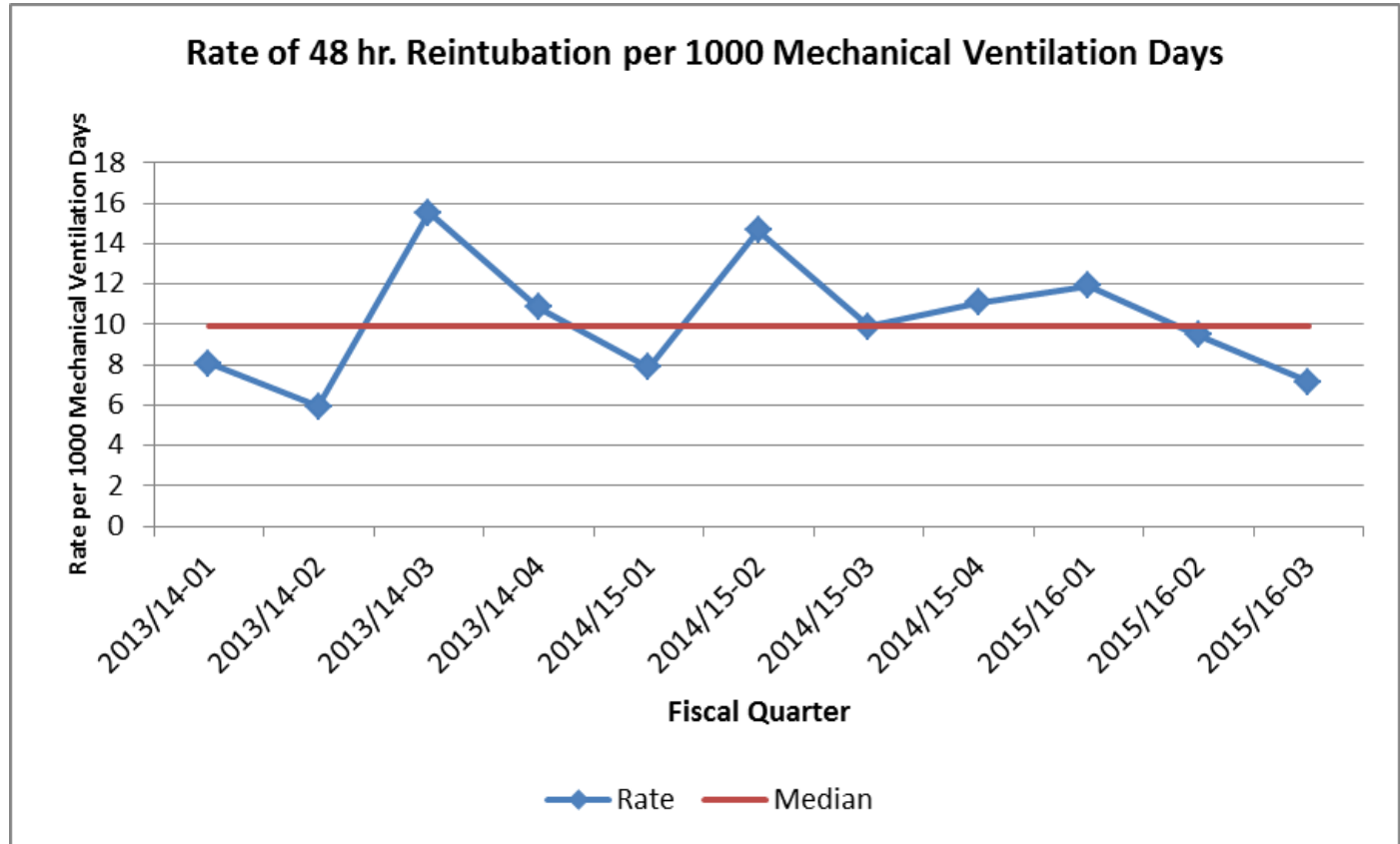
Goal:

Status:

- 15/16-Q4:
7.15/1000

Current Focus:

Team:



Source: ICU Database
Updated October 5, 2016



Unplanned Extubations

Related Accreditation Canada Standard: ????? (2017)

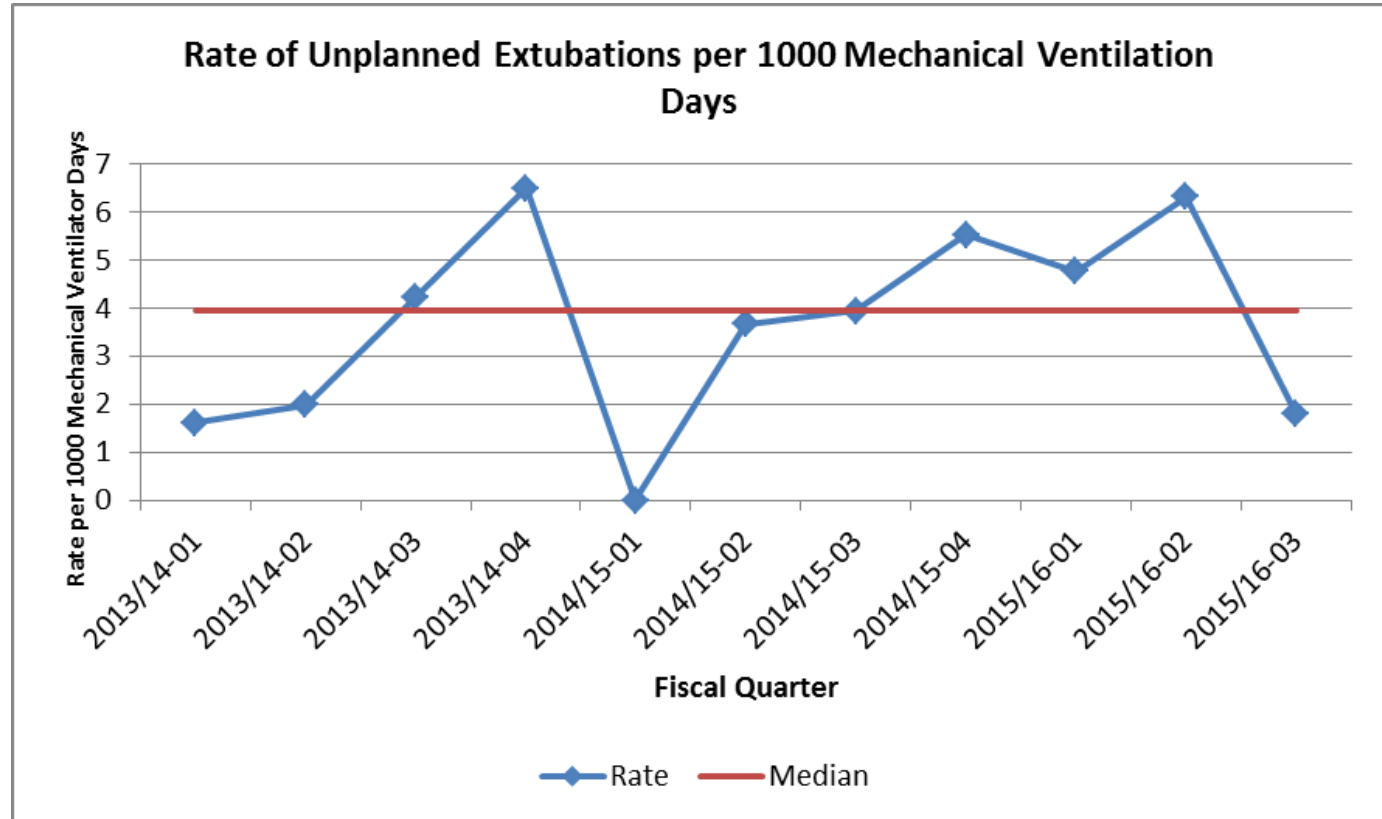
Goal:

Status:

- 15/16-Q4:
1.78/1000

Current Focus:

Team:



Source: ICU Database
Updated October 5, 2016



Nocturnal Discharges

Related Accreditation Canada Standard: ????? (2017)

Goal:

Status:

Current Focus:

| Calendar Year | Nocturnal Discharges | Discharges | Rate per 1000 |
|---------------|----------------------|------------|---------------|
| 2013 | 52 | 505 | 102.970297 |
| 2014 | 40 | 680 | 58.82352941 |
| 2015 | 45 | 724 | 62.15469613 |

Team:

* Excluding ICU death and home discharge



Length of Stay

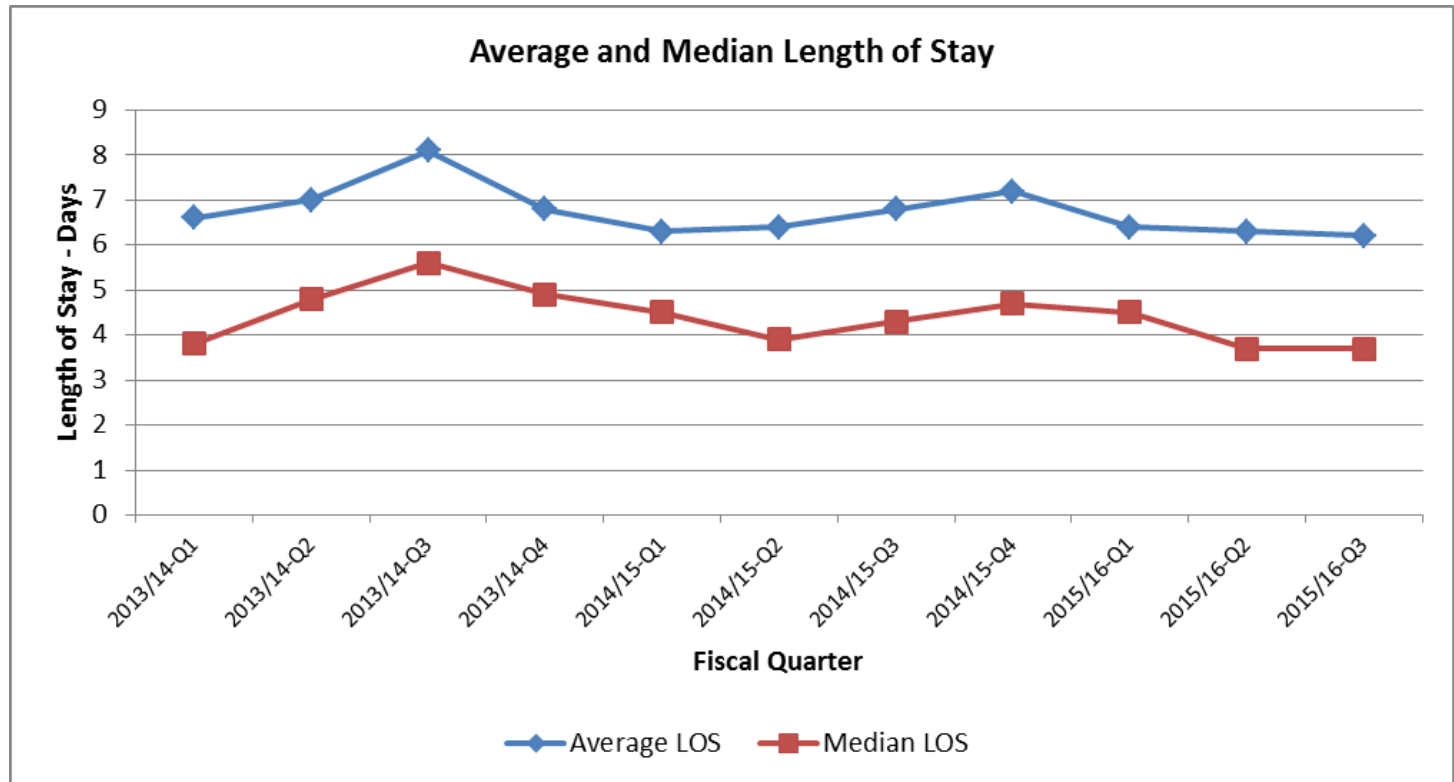
Related Accreditation Canada Standard: ????? (2017)

Goal:

Status:

Current Focus:

Team:



Source: ICU Database
Updated October 5, 2016



Top Admit Services

Related Accreditation Canada Standard: ????? (2017)

Goal:

Status:

Current Focus:

Team:

| Admit Service | Admits | Average ICU LOS | ICU Mortality Rate |
|------------------------|--------|-----------------|--------------------|
| Critical Care Medicine | 1047 | 6 | 16.10% |
| General Medicine | 442 | 7 | 16.90% |
| General Surgery | 150 | 7 | 20.60% |
| Cardiology | 118 | 8 | 30.70% |
| Cardiovascular Surgery | 71 | 12 | 31.60% |
| Nephrology | 48 | 6 | 35.90% |
| Infectious Disease | 24 | 6 | 13.60% |
| Vascular Surgery | 23 | 11 | 38.10% |
| Respirology | 22 | 5 | 5.90% |

April 1, 2013 – December 31, 2015

Source: ICU Database
Updated October 5, 2016

Discharge Disposition

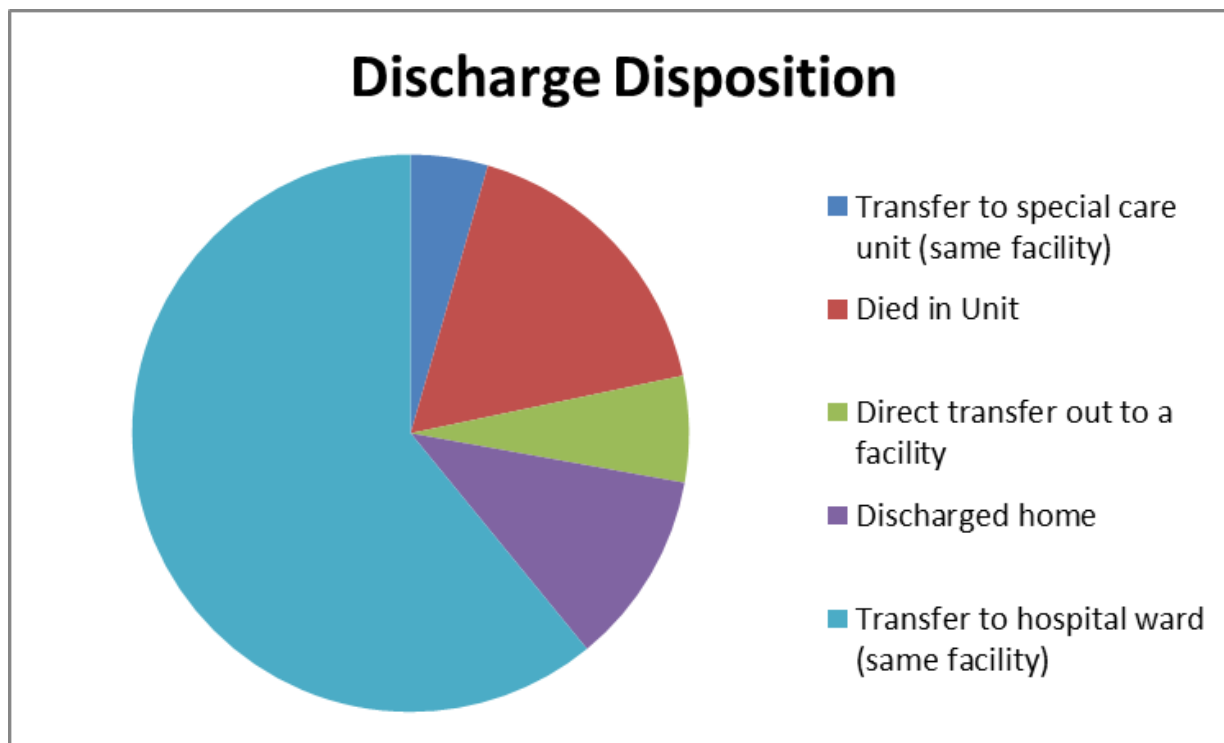
Related Accreditation Canada Standard: ????? (2017)

Goal:

Status:

Current Focus:

Team:



April 1, 2013 – December 31, 2015